

Penlan Fawr Farm

Main House gross internal area = 3,245 sq ft / 301 sq m

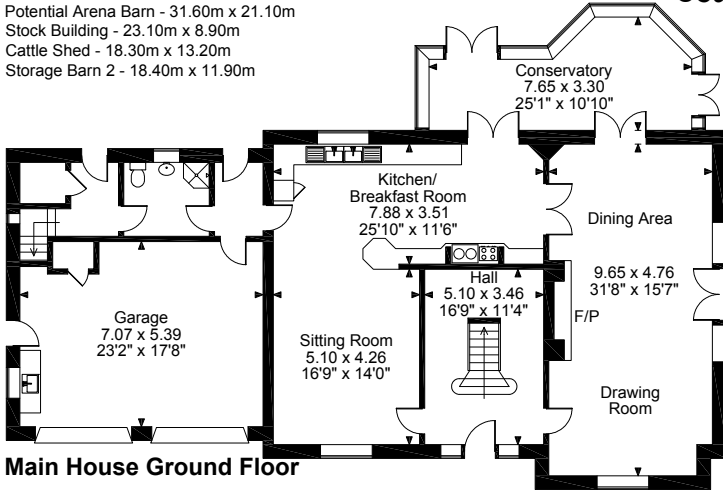
Garage gross internal area = 403 sq ft / 37 sq m

Coach House gross internal area = 1,252 sq ft / 117 sq m

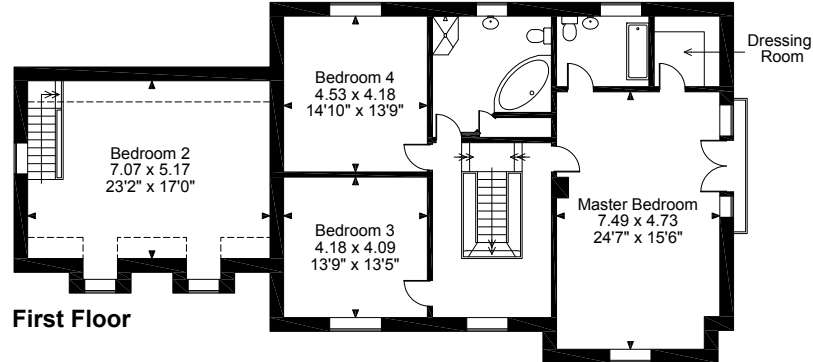


Main Outbuildings

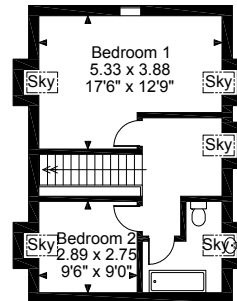
- Dog Kennels - 12.50m x 4.50m
- Storage Barn - 24.80m x 19.00m
- Stables Barn - 24.60m x 18.50m
- Potential Arena Barn - 31.60m x 21.10m
- Stock Building - 23.10m x 8.90m
- Cattle Shed - 18.30m x 13.20m
- Storage Barn 2 - 18.40m x 11.90m



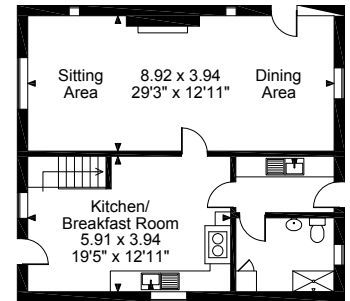
2.66 x 2.27
8'9" x 7'5"



First Floor



Coach House First Floor



Coach House Ground Floor

FOR ILLUSTRATIVE PURPOSES ONLY - NOT TO SCALE

The position & size of doors, windows, appliances and other features are approximate only.

□ □ □ □ Denotes restricted head height

© ehouse. Unauthorised reproduction prohibited. Drawing ref. dig/8175605/OHI